

FANGOHEATER

The compact design as table model makes the unit suitable to be used in any kind of practice. It is possible to process Paraligno as well as Parafango Battaglia in the heater. Because of the direct heating system, the Fango heater is highly suitable for sterilising paraffin (at 135 °C)*. The Fango heater is glass wool isolated and is delivered including a splash cover with cold grip.

* = Sterilisation is only possible when Parafango Battaglia is used (Paraligno can't stand these high temperatures).



1468904 FANGOHEATER

TECHNICAL SPECIFICATIONS

Mains voltage	: 220 – 240 V, 50 – 60 Hz
Current consumption	: 1200 W
Range of thermostat	: 0 – 100° C
Sterilization temperature	: 135° C
Safety device	: automatic switch-off when overheated (160° C)
Capacity	: 15 l
Dimensions	: 37 x 37 x 41,5 cm

STANDARD ACCESSORIES

1468751	Operating manual fangoheater
3444290	Mains cable

OPTIONAL ACCESSORIES

3448112	Paraffin wax, pure form, 25 kg
3448164	Paraligno, 5 kg
3448108	Parafango Battaglia, 12 kg
3448137	Parafoil, 40x60 cm, 1000 sheets
3448136	Heat-transfer liquid for the paraffin-bath, 5 l

PARAFFIN-BATH

The Enraf-Nonius paraffin bath operates on the “au-bain-marie” principle. The paraffin is heated directly by the heat transferred from a heat-transfer liquid. As heat-transfer liquid you can use water or a special thermal-oil (13 ltr). The size of the bath makes it suitable for so-called dipping treatments. It is possible to heat Paraligno, Parafango and pure paraffin in this bath.



- Quicker heating and more even heat distribution
- Practically no temperature fluctuations in the paraffin
- Mobile
- Thermostatic temperature control (30-90 °C)
- Overheating safety mechanism

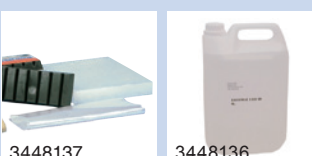
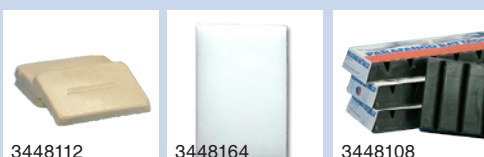
3448162 PARAFFIN-BATH 230V/50HZ 3448163 PARAFFIN-BATH 115V/60HZ

TECHNICAL SPECIFICATIONS

Temperature range:	30-90°C
Internal dimensions:	50x30x21 cm (30 l)
External dimensions:	58x32x50 cm
Mains voltage:	230 V, 50/60 Hz
Power consumption:	2000 W (1760 W for the 115 V version)

STANDARD ACCESSORIES

1400005	Operating manual Paraffin bath
---------	--------------------------------



ENRAF-NONIUS
P.O. Box 12080
3004 GB Rotterdam
The Netherlands
T.: +31-(0)10 - 203 06 00
E: info@enraf-nonius.nl
www.enraf-nonius.com

PACKHEATERS

The Packheater is used for heating packs. The Enraf-Nonius package of Packheaters includes tabletop models and larger mobile models in various sizes. For every use there is a suitable model available



3448191 PACKHEATER



3448260 PACKHEATER SS-2



3448265 PACKHEATER E-1



3448264 PACKHEATER E-2



3448261 PACKHEATER M-2



3448262 PACKHEATER M-4

	Packheater 3448191 Packheater	Packheater SS2	Packheater E-1	Packheater E-2	Packheater M-2	Packheater M-4
TECHNICAL SPECIFICATIONS						
Tank capacity:	29 l	49,3 l	15,4 l	43,2 l	68,8 l	135,8 l
Temperature range:	50-100°C	71-74°C	71-74°C	71-74°C	71-74°C	71-74°C
Mains voltage:	220-240 V	220-240 V	220-240 V	220-240 V	220-240 V	220-240 V
Frequentie:	50/60 Hz	50/60 Hz	50/60 Hz	50/60 Hz	50/60 Hz	50/60 Hz
Power consumption:	700 W	1000 W	1000 W	1000 W	1000 W	1500 W
Dimensions: (wxdxh):	height 42 cm, diameter 35 cm	85,1x52,1x39,4 cm	40,6x33x22,9 cm	54,6x36,8x31,8 cm	85,1x67,3x39,4 cm	85x88,9x50,2 cm
Weight:	7 kg	29,9 kg	7 kg	13,4 kg	37,3 kg	59,7 kg
STANDARD ACCESSORIES						
	1400725 User manual	8 x Enno Moist 25x30 cm (3448176)	4 x Enno Moist 25x30 cm (3448176)	6 x Enno Moist in 3 different sizes	12 x Enno Moist 25x30 cm (3448176)	24 x Enno Moist 25x30 cm (3448176)

OPTIONAL ACCESSORIES

3448135	Base grid, plastic-coated ⁽¹⁾
3448199	Rack, stainless steel ⁽¹⁾
3448272	Storage rack ⁽²⁾
3448132	Tongs made of wood
3448166	Enno Moist 12x30 cm
3448167	Enno Moist 25x30 cm
3448281	Enno Moist 25x45 cm
3448283	Enno Moist 25x50 cm
3448282	Enno Moist 25x60 cm
3448169	Enno Moist oversize, 38x61 cm ⁽³⁾
3448168	Enno Moist neckmodel, 15x61 cm ⁽³⁾
3448176	Protective sleeve Enno Moist standard (25x30 cm)
3448175	Protective sleeve Enno Moist, oversized model (75x82 cm)
3448177	Protective sleeve Enno Moist neck model
3448311	Stadtholder Moorpacking 13x28 cm
3448310	Stadtholder Moorpacking 18x28 cm
3448312	Stadtholder Moorpacking 22x40 cm
3448313	Stadtholder Moorpacking 30x40 cm
3448314	Stadtholder Moorpacking neck-/shoulder model
3448209	Hot/Cold packs 30x38 cm, 2 pieces
3448208	Hot/Cold packs 13x30 cm, 6 pieces.
3448207	Hot/Cold packs 13x14 cm, 12 pieces
3448130	Towelling holder for 3 packs 3448208

(1) = only for Packheater Model 3448191
 (2) = only for Packheater Model M-2 and M-4
 (3) = not for Packheater Model E-2 or 3448191



ENNO MOIST

Cotton pack filled with volcanic mineral grains.



STADTHOLDER MOORPACK

Synthetic pack filled with 'moor'.
 • Heat is released extremely slowly
 • Can be heated in a microwave



HOT/COLDPACKS

Synthetic gel pack.



CHILLING UNITS

Mobile quick-chiller to bring cold packs to the ideal temperature for use and to make sure they stay that way all day long. The specially designed chilling elements guarantee a rapid chilling. Easily moved on the 7½ cm rubber wheels.



3448274 CHILLING UNIT MODEL C-5

STANDARD ACCESSORIES

1468751	Operating manual
3448284	6x Colpac 28x36 cm
3448288	6x Colpac 16x28 cm

OPTIONAL ACCESSORIES

3448288	Colpac 16x28 cm
3448284	Colpac 28x36 cm
3448209	Hot/Cold packs 30x38 cm, 2 pieces
3448208	Hot/Cold packs 13x30 cm, 6 pieces.
3448207	Hot/Cold packs 13x14 cm, 12 pieces
3448130	Towelling holder for 3 packs 3448208

TECHNICAL SPECIFICATIONS

Mains voltage:	220-240 V, 50 Hz
Current:	2 A
Work:	0.14914 kWh of 1/5 hp
Type of refrigerant:	R-134A:
Amount of refrigerant:	0,325L
Test pressure:	high 1.62 MPa (235 psi); low 1.03 MPa (150 psi)
Normal operating temperature:	-12°C tot -6°C
Dimensions (h x w x b):	84 x 41 x 69 cm
Weight:	74 kg



3448288



3448284



3448209



3448208



3448207



3448130

INFRARED RADIATORS



Partner for Life

For many years, Infrared Radiators have been a well-known accessory in the field of thermotherapy. Infra-red thermotherapy is often used for the reduction of pain as well as for general healing of wounds. The skin absorbs the heat and passes it through to the blood stream in a natural way.

Positioning is easy because of the specially developed fast fixation device. The unit must be ordered with a stable mobile stand, with height adjustment and safety locks on the wheels.



1979901 IR 6 INFRA-RED RADIATOR

TECHNICAL SPECIFICATIONS IR 6

Radiators:	6x150 W
Power consumption (220 VAC):	900 W (220 VAC)
Timer adjustment:	up to 30 minutes
Dimensions:	46x73x20 cm (WxLxD)
Weight:	approx. 14,6 kg



1979902 IR 3 INFRA-RED RADIATOR

TECHNICAL SPECIFICATIONS IR 3

Radiators:	3x150 W
Power consumption (220 VAC):	450 W (220 VAC)
Timer adjustment:	up to 30 minutes
Dimensions:	36x73x20 cm (WxLxD)
Weight:	approx. 11,3 kg

OPTIONAL ACCESSORIE

3444639 Mobile support for IR3 and IR6 radiators



ENRAF-NONIUS
P.O. Box 12080
3004 GB Rotterdam
The Netherlands
T.: +31-(0)10 - 203 06 00
E: info@enraf-nonius.nl
www.enraf-nonius.com