

SFRI

Medical Diagnostics



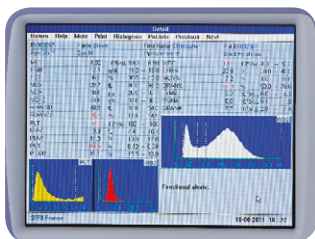
H18LIGHT

3-Part Differential Blood Cell Counter
An Economic Solution for Labs

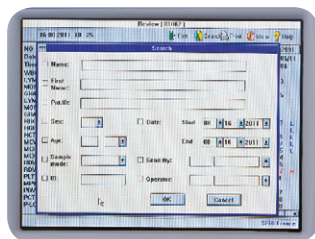
H 18 LIGHT

- Cost effective: very low consumption rate of reagents
- Throughput: 60 seconds per result
- Up to 20 000 patient results can be stored
- Compact size, large color LCD display
- Built-in thermal printer, external keyboard and mouse provided
- Optional barcode reader

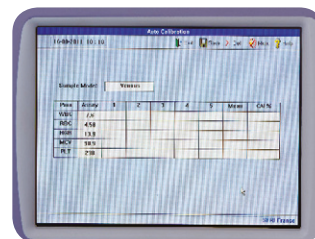
Comprehensive Operating System



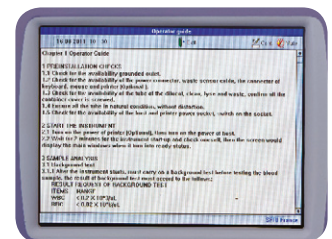
Large LCD display, 20 parameters and 3 color histograms on one screen



Patient data search function



Fully automatic calibration in all sample modes



On-board operator guide

Consumables

Up to 30% less consumption*



	NAME	TYPE	REFERENCE	VOLUME	SHELF LIFE**
REAGENTS	Diluton H18	Diluent	HSD320	20 L	36 months
	Lysoglobine H18	Lyse	HSL301	500 ml	24 months
	Diluterge H18	Cleaner	HSG302	2 L	24 months
MAINTENANCE SOLUTIONS	Diluclair H18	Shutdown	HSC301	60 ml	12 months
	Hemaclair H18	Emergency cleaner	HSC101	60 ml	12 months

	NAME	TYPE	REFERENCE	CVS	OVS
CONTROLS	BloodTrol 16	3 tubes N	R021005	105 days	14 days
		3 tubes LNH	R021001		
		6 tubes N	R021002		
		6 tubes LNH	R021006		
CALIBRATOR	BloodCal	1 tube	R021003	45 days	5 days

*Local distributors can provide comparative table - **From date of manufacture

Ideal for Small to Mid-size Laboratories

Low cost and affordable

The long shelf life of reagents and, low consumption rate ensure maximum value with low running costs. Micro volumes of reagents and samples and limited maintenance operations all add up to an economical solution.

Maximum value for labs

Accurate and reliable

Fully automatic calibration and comprehensive quality control programs with Levey-Jennings charts ensure highly reliable and accurate results.

Reliable and accurate results with low running costs day in and day out



Answers the needs of small to mid-size labs

Powerful and Practical

The H18 LIGHT's high-end software provides fast computing power in a small compact analyzer to save space. Patient data search function ensures easy data retrieval of up to 20,000 patient results including histograms. Throughput of 60 tests per hour fits small to mid-size laboratory needs.

A hassle free routine

Flexible and User-friendly

The intuitive Windows® based software, large display and automated functions make for easy and efficient workflow. Optional barcode reader saves time and avoids identification errors.

A safe working environment

Operators can work safely thanks to the cyanide free H18 LIGHT lysing reagent.

Operator security

H18LIGHT

TECHNICAL SPECIFICATIONS

H18 LIGHT: REFERENCE A0201

PARAMETERS

WBC, RBC, HGB, PLT, MCV, MPV measured;
Lym#, Mon#, Gran#, HCT, MCH, MCHC, PCT% calculated;
Lym%, Mon%, Gran%, RDW-SD, RDW-CV, PDW%, P-LCR%
given by histograms.

PRINCIPLES

Impedance technology for blood cell counting and cyanide-free optical detection for hemoglobin.

PERFORMANCE

Parameter	Linearity Range	Precision (CV%)
WBC (10 ⁹ /L)	0-99.99	2.5% @ 5-10
RBC (10 ¹² /L)	0-9.99	2.0% @ 4-6
HGB (g/L)	0-300	2.0% @ 50-200
MCV (fL)	40-150	1.0% @ 70-120
PLT (10 ⁹ /L)	10-999	5.0% @ 200-450

QUALITY CONTROL

Levey Jennings charts and calculation of Mean, SD, CV;
up to 9 control files, 31 runs/ file.

THROUGHPUT

60 seconds per sample.

SAMPLE VOLUME

Venous	14 µl
Capillary	14 µl
Pre-diluted	20 µl

MEMORY STORAGE

20 000 patient files
Mono-directional LIS transfer

INPUT/OUTPUT

Keyboard, mouse and barcode interface
External monitor and parallel printer interface
RS232 x 1; USB port x 2

PRINTOUT

Fast thermal printer, 57.5 mm wide paper,
recording width 48 mm
Optional external printer

DISPLAY

8" LCD screen
High resolution: 640x480 mm
Color display

INTERFACE

Available in English, French and Spanish

OPERATING ENVIRONMENT

Temperature 18°C – 35°C
Humidity < 85% (max humidity)
Atmospheric pressure 86.0 – 106 kPa

POWER REQUIREMENTS

A.C. 110/220 V ±10%; 50 – 60 Hz
Fuse: A.C. 250 V; 2 A

DIMENSIONS

330(W) x 430(H) x 380(D) mm

WEIGHT

17.5 kg

Your Local Distributor:

